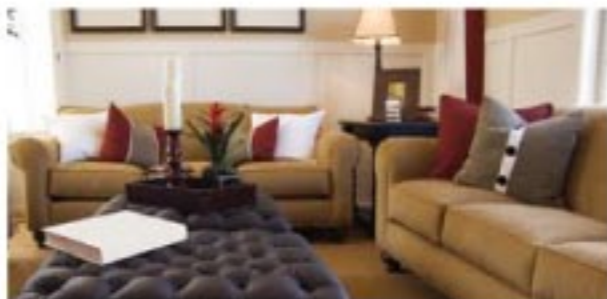
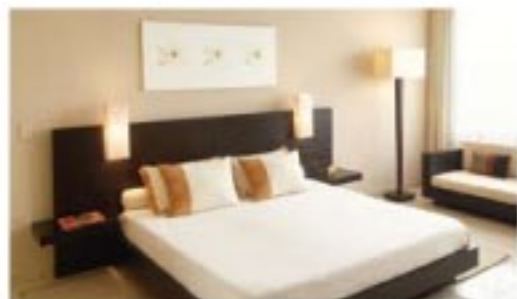


WESTAR TERRACE GARDEN

*W*ELCOME TO
THE OPEN SKY





Key Features

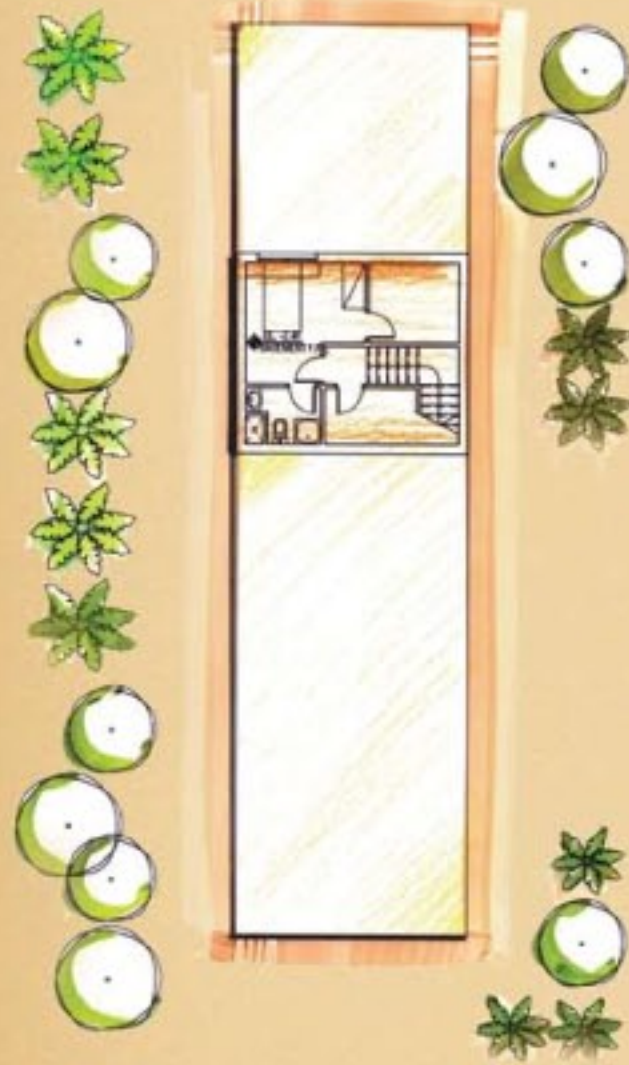
- 3 bedroom townhouse plus maid's room
- Basement + Roof top Garden
- Private pool
- Private parking.
- Freehold*

- Financing available**
- A complete neighbourhood with community centres, parks, schools, clubs and round the clock security.

Subject to UAE law* Subject to bank approval**



Basement



Ground Floor



1st Floor



2nd Floor



APPROX. SIZE 5000 SQ.FT.



Terrace Floor



All materials, dimensions and drawings are approximates. Information is subject to changes without notice. Actual usable floor space may vary from the stated floor plans. Drawings are not to scale. The developer reserves the right to make minor revisions to the floor plans. All images shown in brochure are for reference purpose only.



Located between Emirates, Al Khail & Al Barsha Roads, the project is designed to be self-sustained & will include international schools, town & country clubs, community centres, jogging & cycling trails, sports & leisure facilities and round the clock security, all providing peace of mind & a real sense of community.

Variety forms the central theme of Jumeirah Village with diverse retail & leisure facilities beautiful landscaping & distinct architecture combining to create inspired living spaces for the modern family.





Not far from the dynamic metropolis that is Dubai, but a world away from the hustle and bustle, Jumeirah Village is a true oasis of peace and calm with open green areas and tranquil water features. Set amid luscious landscaped surroundings, it offers every amenity required for true world class living.

Jumeirah Village

As the developer of more than \$30 billion of real estate in Dubai, Nakheel, has been instrumental in turning Dubai into one of the fastest growing cities in the world in the 21st century, & a world class destination for business & tourism.

The creator of a variety of landmark developments including The Palm island, three man-made islands in the shape of palm trees; & The World, a series of 300 man-made islands that collectively form the map of The World. When completed, Nakheel's developments will have added more than 1000 km of waterfront to Dubai.

Part of Nakheel's distinctive Jumeirah Family set amid luscious landscaping & unsurpassed leisure & lifestyle amenities; Jumeriah Village a holistic living experience for its residents in the heart of Dubai's most desirable district.



Location Map - Jumeirah Village



Mortgage Partner



Escrow Trust Account



A member of  GOLYAN
GROUP

Tel.: +971 4 329 8700 Fax: +971 4 329 8701, P.O.Box: 75250, Dubai, U.A.E.
E-mail: info@westarproperties.net Website: www.westarproperties.net